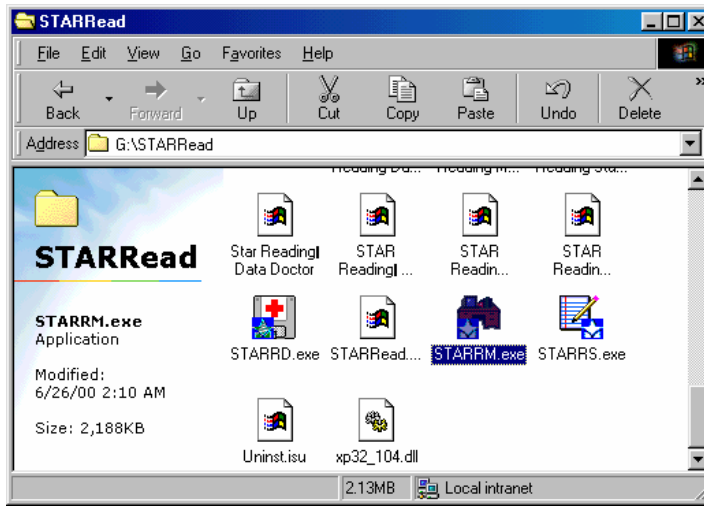


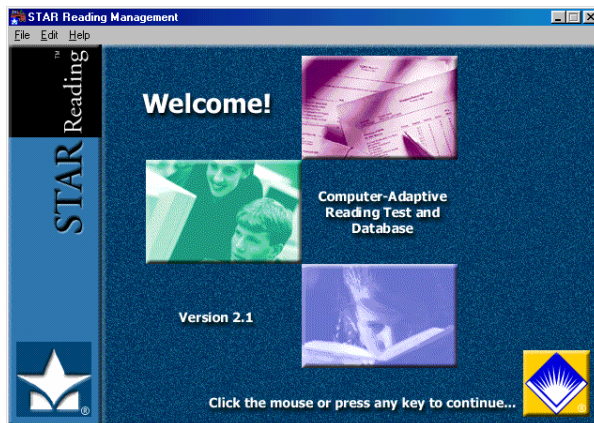
## Register Star Reading and AR on Network Computers

Once you have put a shortcut to the AR and STAR programs on your school's RS01, then you must open the programs and register them so that they will work correctly. Follow the steps below to register the software on the remaining networked computers. The same instructions apply to both the AR and STAR programs.

- 1) Open the Star Reading Management program by double-clicking on the **STARRM.exe** icon .

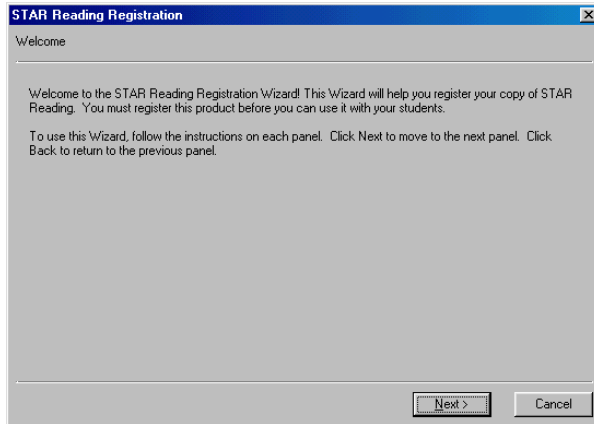


- 2) This will then start the program and present the Star Reading splash screen.

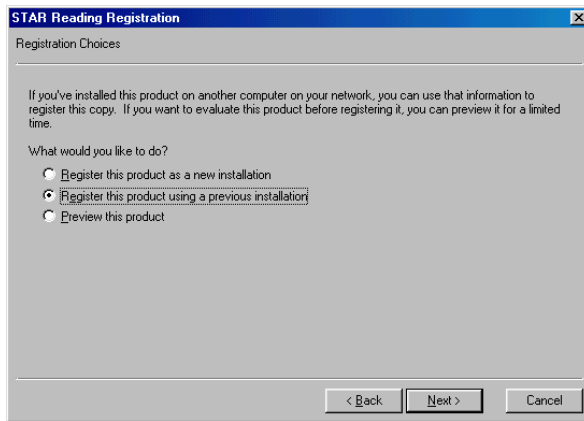


Click once on the Star Reading splash screen to begin the registration wizard.

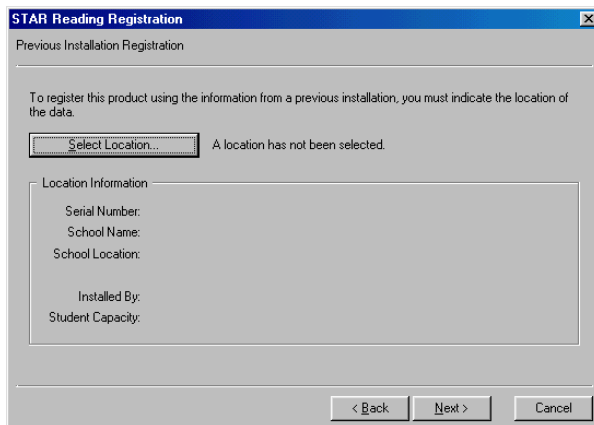
- 3) Once the **Star Reading Registration** wizard starts, click on the [Next] button on the Welcome window.



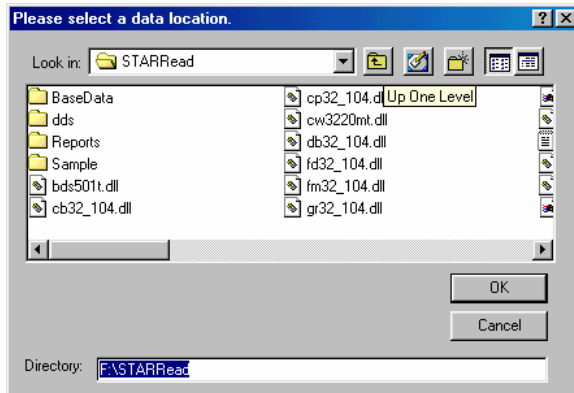
- 4) On the Registration Choices window, click the “Register this product using a previous installation” bullet and then click the [Next] button.



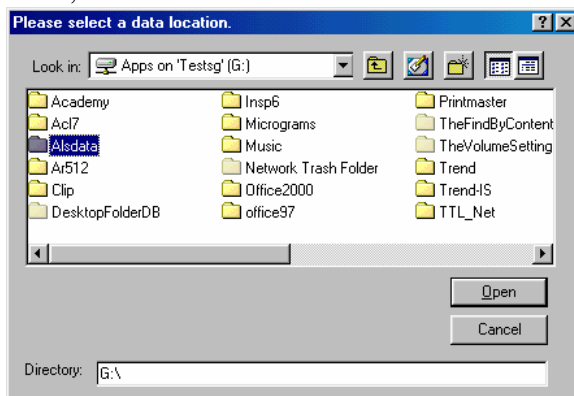
- 5) On the Select Location window, click on the [Select Location...] button.



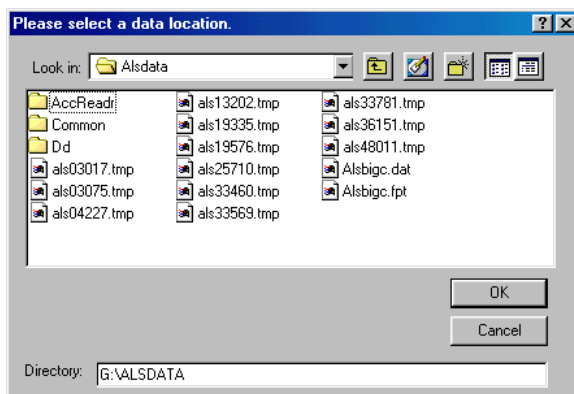
- 6) On the Please select a data location window, you will be looking for the location of the data folder. The **Alsdata** folder on the server is the data location folder for all AR product registration information. Locate the **Alsdata** folder by clicking once on the Up One Level button (the button with the arrow pointing up).



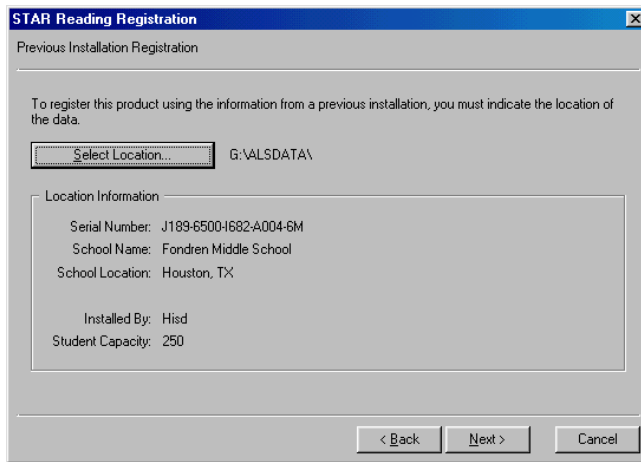
- 7) Now, double-click on the **Alsdata** folder.



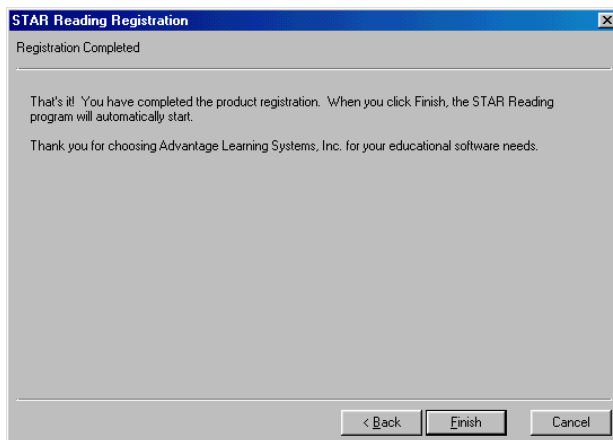
- 8) Once the **Alsdata** folder is open, click on the [OK] button.



- 9) Now, the school's registration information should appear on the screen. Click on the [Next] button to proceed.



- 10) On the Registration Completed window, click on the [Finish] button.



The installation is complete and you can now use your program.